



AudioCodes One Voice for Microsoft Lync **AudioCodes One Box 365™**



Giving Voice to Office 365 Customers

Today with Office 365, your organization has the opportunity to provide employees with a best-in-class collaboration experience across devices with an integrated productivity solution. However, you are still restricted to internal collaboration within your corporate network. Lync Enterprise Voice completes your vision for a single system for all real-time collaboration and communication. It provides a full replacement for your existing PBX, supporting deployment options aligned to your operational needs and strategic plans.

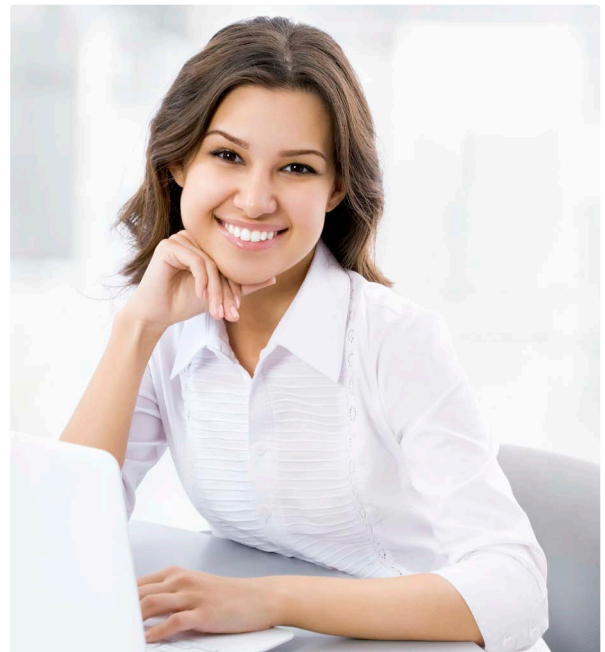
AudioCodes One Box 365 is the fastest and most cost-effective way to bring Lync voice to your Office 365 deployment. One Box 365, part of AudioCodes' One Voice for Lync suite of products, is a versatile Lync voice appliance family for SMBs and enterprises that simplifies and accelerates enterprise voice deployments in conjunction with the Office 365 subscription for your HQ and your branches.

Benefits

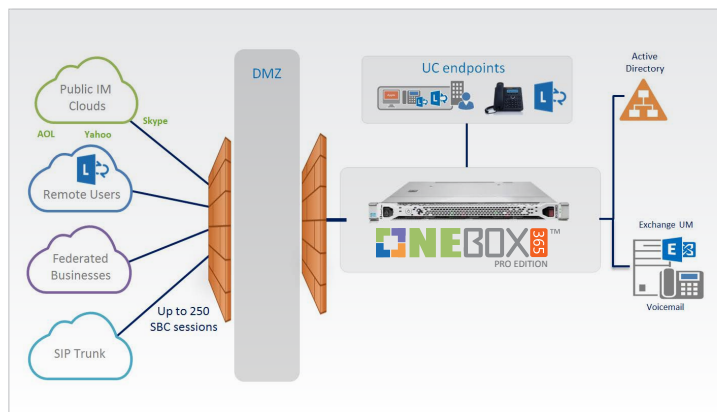
- Simpler and faster to deploy over traditional on-premises deployment
- Improved voice and conferencing quality over a remote hosted platform
- Provides Lync survivability in case of WAN failure
- Full Unified Communications (UC) without compromising cloud benefits
- Combined with AudioCodes IP phones and management tools, this is a true one-stop-shop solution
- Approved Lync hybrid split domain architecture

Key Features

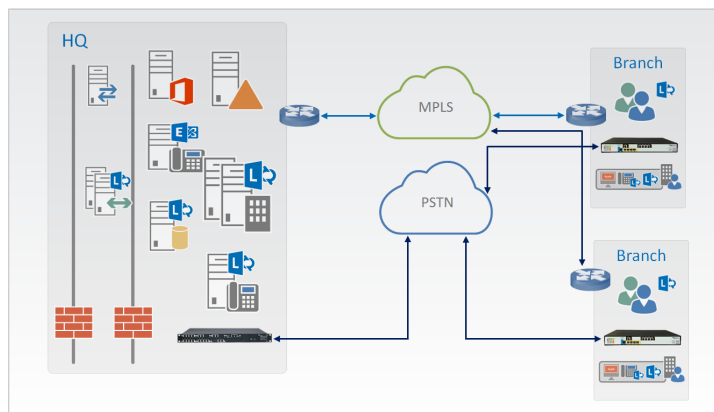
- Lync server roles and Media Gateway/Session Border Controllers (SBC) all in one box
- Intuitive GUI for self-management
- Fully licensed SQL Server and Windows Server included
- Full PBX enterprise voice features
- Scales from tens of users to 5,000 users



Sample Architecture Diagrams



Full Lync for a single site with SIP Trunk



Branch Office Deployments

AudioCodes One Box 365™ Deployment Scenarios

The versatility of One Box 365 allows for leveraging the appliance in several scenarios. The following are the most common:

Single Site/HQ



From SMB up to 5,000 enterprise users, One Box 365 can be deployed as the main Lync voice infrastructure, connecting to Office 365 or in a standalone mode. Leveraging the native capabilities of the Lync server, One Box 365 can also be deployed in disaster recovery (all models) or full high availability modalities (One Box 365 Pro and Enterprise Edition only).

Branch Sites



Providing full survivability and local PSTN termination, One Box 365 is an ideal solution for obtaining maximum communications performance for remote branches. Whether it is connected to the main HQ Lync server deployment or a partner hosted platform, branch users can enjoy uninterrupted optimal service for all communications modalities, even in the case of a WAN failure.

Proof of Concept



Rarely does a customer decide to fully deploy Lync voice without an initial trial. However, with the company's platform in the Microsoft cloud, enabling voice for some of the users is not a trivial process. With the proprietary Office 365 Connector, One Box 365 can dramatically simplify and accelerate proof of concept trials, importing locally and enabling only the desired user base with enterprise voice, without impacting the customer's infrastructure. Trialing Lync voice has never been so simple.

Key Highlights

One Box 365 Configuration Management Console

One Box 365 comes with a friendly graphical user interface that facilitates configuration featuring a deployment wizard for the most common deployment scenarios.

Simplified User Synchronization

In order to simplify integration with Office 365, One Box 365 comes with two types of connectors:

- *Active Directory Connector* - this allows for connection with the local customer domain controller by creating trusted connectivity
- *Office 365/Azure AD Connector*- allows the import and migration of a selection of Office 365 users to the One Box 365 appliance pool

Disaster Recovery

Site resilience can be achieved by connecting two One Box 365 units in pair-pool modality. Whether both units are in the same site or located in two different branches, one unit can provide disaster recovery for the other. One Box 365 Pro and Enterprise Editions can also be configured in full high availability mode.

Approved Lync Hybrid Split Domain Architecture

One Box 365 leverages the Lync multi-forest architecture as defined by Microsoft in TechNet, implementing an approved Lync hybrid split domain architecture.

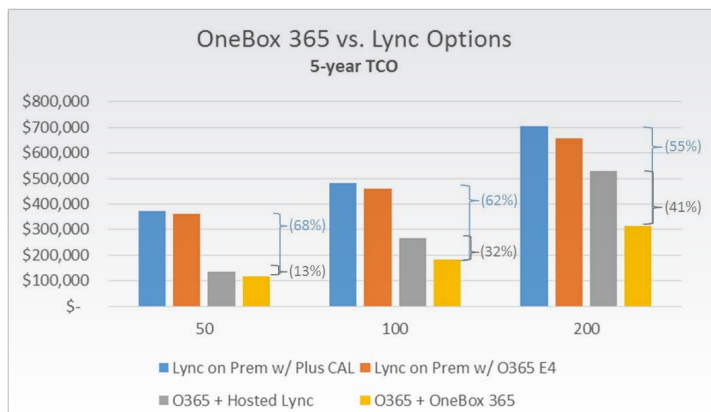
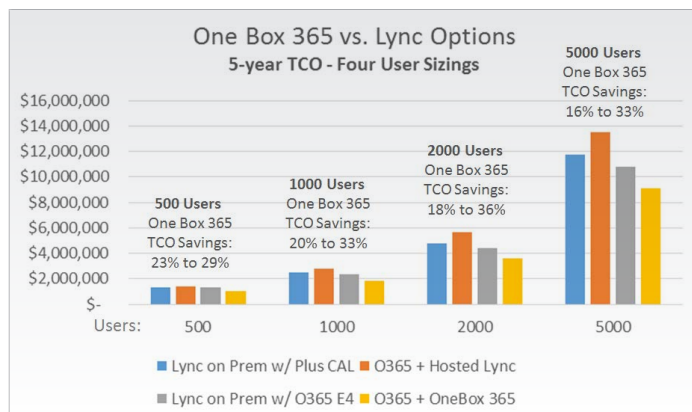
For more information, please refer to the following TechNet pages: <https://www.microsoft.com/en-us/download/details.aspx?id=44276>

AudioCodes One Box 365 Can Save as Much as 68% on TCO

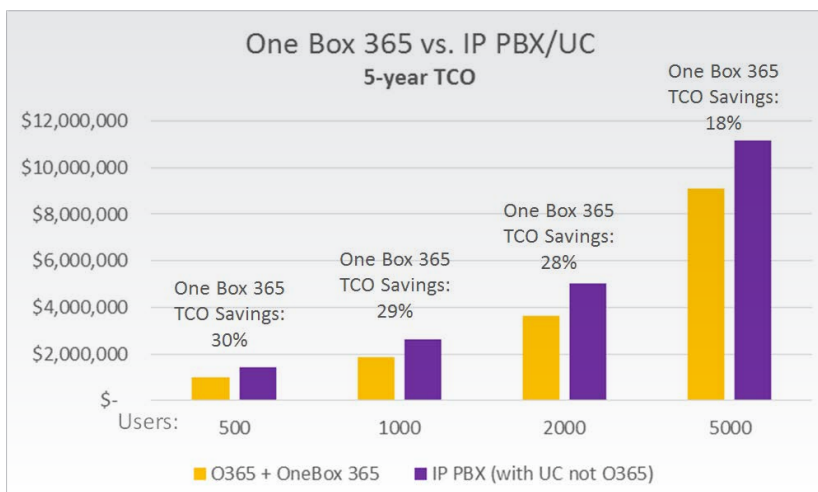
In an independent analysis conducted by Dr. Brent Kelly, President of KelCor Inc. and Marty Parker, Principal of UniComm Consulting, One Box 365 was tested to see if it would be compelling to SMBs and enterprises from the TCO perspective. The study looks to calculate TCO over a 5-year period (60 months) including costs for: Equipment, licenses or hosting fees, phones, maintenance, operational costs (staff, utilities, bandwidth). The study showed that One Box 365 can save as much as 68% on TCO as compared to other Lync on-premises deployment options.

TCO Savings Across All Scales

The analysts studied two scenarios: SMBs from 50 to 200 users and enterprises from 500 to 5,000 users. In the study, they compared the One Box 365 solution versus Lync on-premises deployment and Hosted Lync. The following charts summarize the findings.



The analysts also compared the TCO of OneBox 365 and the Office 365 E4 plan to a typical enterprise Standalone IP-PBX with UC (IM&P, conferencing and mobility) in deployment scenarios of 500, 1,000, 2,000 and 5,000 users, demonstrating consistent TCO savings across all scales.





	One Box 365 Standard Edition	One Box 365 Pro Edition	One Box 365 Enterprise Edition
Max. Site Capacity	Up to 200 users	Up to 500 Users	Up to 5,000 Users
Including pre-installed	<ul style="list-style-type: none"> Lync Server Standard Edition: <ul style="list-style-type: none"> - Front End Server - Mediation Server - Monitoring Server - Edge Server Dedicated Connection Tools <ul style="list-style-type: none"> - Active Directory connector - Office 365 connector Windows Server 2012 R2 Emb (x3) SQL Server Std 2012 Emb Gateway/SBC Management and Configuration application 	<ul style="list-style-type: none"> Lync Server Standard/Enterprise Edition*: <ul style="list-style-type: none"> - Front End Server - Mediation Server - Monitoring Server - Edge Server Dedicated Connection Tools <ul style="list-style-type: none"> - Active Directory connector - Office 365 connector Windows Server 2012 R2 Emb (x5) SQL Server Std 2012 Emb Reverse Proxy Software Session Border Controller (SBC) Management and Configuration application Additional virtual machines 	<ul style="list-style-type: none"> Lync Server Standard/Enterprise Edition*: <ul style="list-style-type: none"> - Front End Server - Mediation Server - Monitoring Server - Edge Server Dedicated Connection Tools <ul style="list-style-type: none"> - Active Directory connector - Office 365 connector Windows Server 2012 R2 Emb (x5) SQL Server Std 2012 Emb Reverse Proxy Software Session Border Controller (SBC) Management and Configuration application Additional virtual machines
Telephony Connectivity Options	Available in five configurations: <ul style="list-style-type: none"> • Single E1/T1 with 4 FXS • 8 BRI and 4 FXS • 2E1/T1 and 4 FXS • 8 FXO & 4 FXS • SBC only (30 sessions included, additional sessions can be ordered) 	<ul style="list-style-type: none"> • SBC only (up to 150 sessions can be ordered) • External Media Gateway can be added (not included) 	<ul style="list-style-type: none"> • SBC only (up to 500 sessions can be ordered) • External Media Gateway can be added (not included)
Technology	<ul style="list-style-type: none"> • Based on AudioCodes Mediant 800B with powered-up OSN module 	<ul style="list-style-type: none"> • Mid-scale server-based appliance with Software SBC • 32GB RAM, 6 Core Processor, Dual Power Supply, 2HDD with RAID 1 	<ul style="list-style-type: none"> • Enterprise scale server-based appliance with Software SBC • 64GB, 2 Processors with 12 Cores, Dual Power Supply, 4HDD
Disaster Recovery / High Availability	DR	DR HA*	DR HA*
Intuitive GUI	✓	✓	✓
Simplified User Synchronization	✓	✓	✓

* Optional HA is possible based on Lync Server Enterprise Edition with additional SQL server, licensing and front end servers. Lync Server Enterprise Edition can be chosen during unit's setup process.



International Headquarters
 1 Hayarden Street,
 Airport City
 Lod 7019900, Israel
 Tel: +972-3-976-4000
 Fax: +972-3-976-4040

AudioCodes Inc.
 27 World's Fair Drive,
 Somerset, NJ 08873
 Tel: +1-732-469-0880
 Fax: +1-732-469-2298

©2015 AudioCodes Ltd. All rights reserved. AudioCodes, AC, HD VoIP, HD VoIP Sounds Better, IPmedia, Mediant, MediaPack, OSN, SmartTAP, VMAS, VolPerfect, VolPerfectHD, Your Gateway To VoIP and 3GX are trademarks or registered trademarks of AudioCodes Limited. All other products or trademarks are property of their respective owners. Product specifications are subject to change without notice.

Ref # LTRM-20102 02/15 V.3

Contact us: www.audiocodes.com/info
Website: www.audiocodes.com